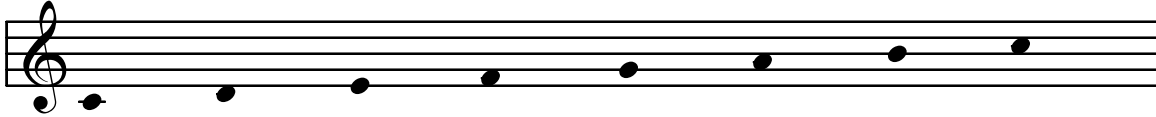
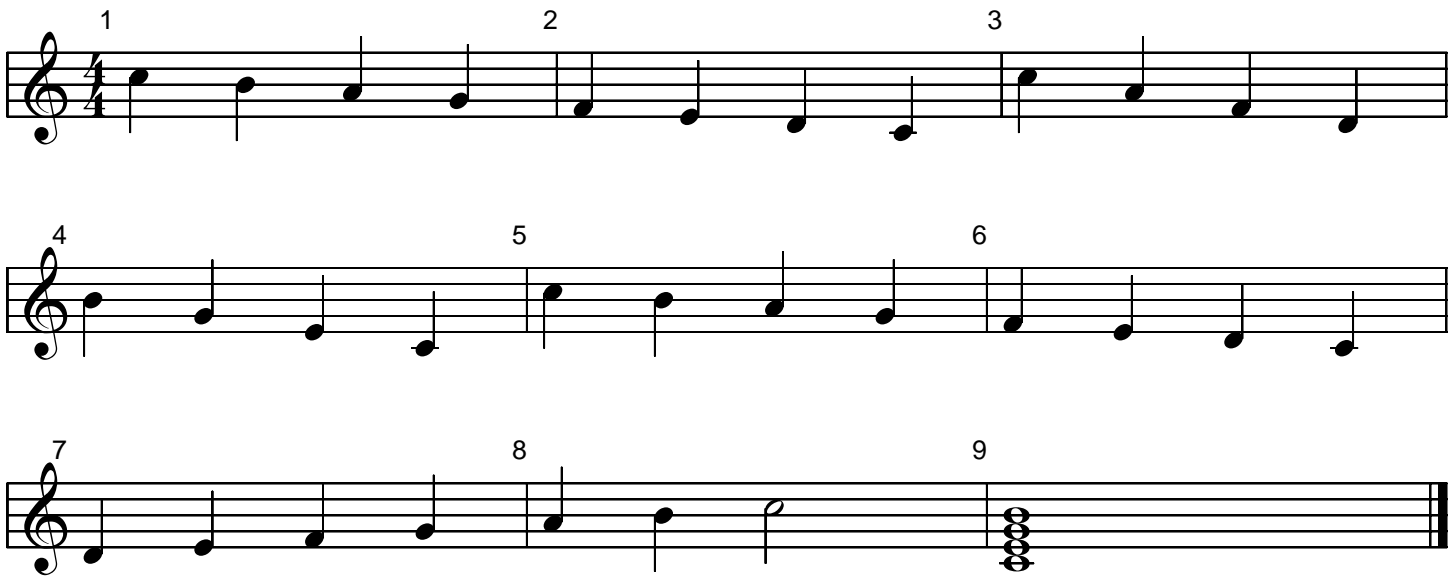


# Imitation Change Ringing

Bells Used: 8; 2 octaves (May be doubled in octaves to include more ringers.)



Susan T. Nelson



The musical notation consists of three staves, each containing three measures. The first staff contains measures 1, 2, and 3. The second staff contains measures 4, 5, and 6. The third staff contains measures 7, 8, and 9. The notes are as follows: Measure 1: C6, B5, A5, G5, F5, E5, D5, C5. Measure 2: C6, A5, F5, D5. Measure 3: B5, G5, E5, C5. Measure 4: C6, B5, A5, G5, F5, E5, D5, C5. Measure 5: D5, E5, F5, G5, A5, B5, C6. Measure 6: D5, E5, F5, G5, A5, B5, C6. Measure 7: D5, E5, F5, G5, A5, B5, C6. Measure 8: D5, E5, F5, G5, A5, B5, C6. Measure 9: D5, E5, F5, G5, A5, B5, C6. The piece ends with a double bar line.

For 4 ringers playing 2 bells each. C scale of (8) handbells, chimes or belleplates.

Give each ringer 2 bells with highest note in their RIGHT hand and line them up in scale order.

All sequences start with the highest bell and are descending:

1. Descending scale (Right-Left): C6, B5, A5, G5, F5, E5, D5, C5

2. Play only Right Hand bells (descending): C6, A5, F5, D5

3. Play only Left Hand bells (descending): B5, G5, E5, C5

4. Descending scale (Right-Left) again (C6, B5, A5, G5, F5, E5, D5, C5) followed immediately by....

5. Ascending scale (Left-Right) [C5 does NOT repeat]: D5, E5, F5, G5, A5, B5, C6

6. Toll bells in Left Hand to ring the hour.